

A large, curved image at the top of the page showing a microscopic view of wood's cellular structure, with golden-brown cell walls and dark, circular lumens.

Wood Anatomy

At the FCBA wood laboratories, we place our expertise and resources in macroscopic and microscopic recognition at your service

> You need:

- To **optimise** your supply cycle,
- To **ensure** the suitability of wood species for the products being manufactured,
- To **verify** the compliance of delivered products,
- To **identify, recognise** and **anticipate** in order to avoid disputes,
- To **use** the appropriate wood species,
- To **limit** economic risks

> Our services:

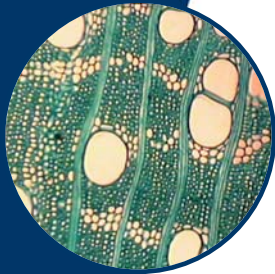
• Identification and/or verification of wood species

- Examining cross sections with optical microscopes and digital imaging.
- Using a xylarium comprising 700 specimens and 400 microscopic slides of temperate and tropical wood species.

• Measurement of physical characteristics

- Density,
- Percentage of sapwood,
- Texture,
- Width of growth rings,
- Visual characteristics of wood,
- Mechanical classification.





- **We put our expertise and resources in wood anatomy to work for you, in the aim of:**
 - **Determining or verifying** the name of a wood species,
 - **Ensuring** the soundness and security of your supply cycle by guiding your choices or conducting spot checks,
 - **Enabling** supply tracking by setting up a control chain from the delivery acceptance stage.
- **We offer two formulas to meet your needs in terms of flexibility and promptness:**
 - **One-off action** for which a specific report is established,
 - **Annual subscription** based on a predetermined number of recognition actions, with a variable timeline and sliding scale tariffs.

› The benefits for you:

- The recognised competence of a laboratory specialised in wood.
- The impartiality and neutrality of our results.
- The flexibility and promptness provided by the annual subscription.
- A service allowing you to anticipate and avoid disputes.

› Our references include:

- Supply tracking and follow-up for barrel makers,
- Checking specifications for furniture wholesalers,
- Verifying wood species used by stake manufacturers,
- Services for court experts and insurance companies,
- Delivery acceptance procedures in the distribution and trade sectors.



Contacts

Nathalie PASSEDAT

Expert in Wood Anatomy
nathalie.passedat@fcba.fr
Tél. : +33 (0)5 56 43 64 12

Fabrice MIGUEL

Business Representative
fabrice.miguel@fcba.fr
Tél. : +33 (0)5 56 43 64 41